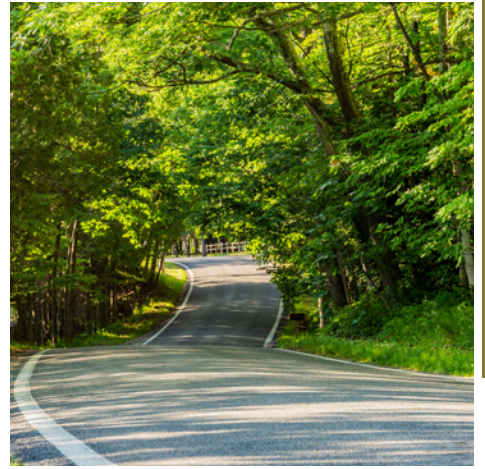


**TN Thrive** North  
**More Water. Less Traffic.**  
A Better Business Model.



**Frankfort/Elberta**  
Benzie County  
1102 Main Street



**Joshua Mills**  
Superintendent for City of Frankfort,  
Zoning Administrator for Village of  
Elberta, Gilmore Township, and Blaine  
Township  
(231) 352-7117  
[jmills@cofrankfort.net](mailto:jmills@cofrankfort.net)

PREPARED BY:

**4 FOURTH**  
**ECONOMY**  
[WWW.FOURTHECONOMY.COM](http://WWW.FOURTHECONOMY.COM)

 **Networks  
Northwest**  
Talent / Business / Community  
[WWW.NETWORKSNORTHWEST.ORG](http://WWW.NETWORKSNORTHWEST.ORG)

# Opportunity

This two-story mixed-use building has Main Street frontage, is directly across the street from the Frankfort Manufacturing Company, and directly west to two vacant parcels and neighboring another mixed-use building for sale. Sites could be purchased in a bundle for larger development. This site is also adjacent to the Betsie Valley Railway and one block away from the Frankfort Municipal Marina.

**Size:** 15,000 sq ft

**Zoning:** Commercial

**Vacancy:** Occupied

**Previous Use:** First floor is a storage space and second floor is residential.

**Move-in Ready:** Yes

**Building Plan:** No

**Current Owner:** Bruce Jewel

# Site Amenities

**Public Transportation:** Yes

**Highway/Interstate Access:** Yes

**Transit Corridor:** 200 Ft.

**Rail:** 41 miles

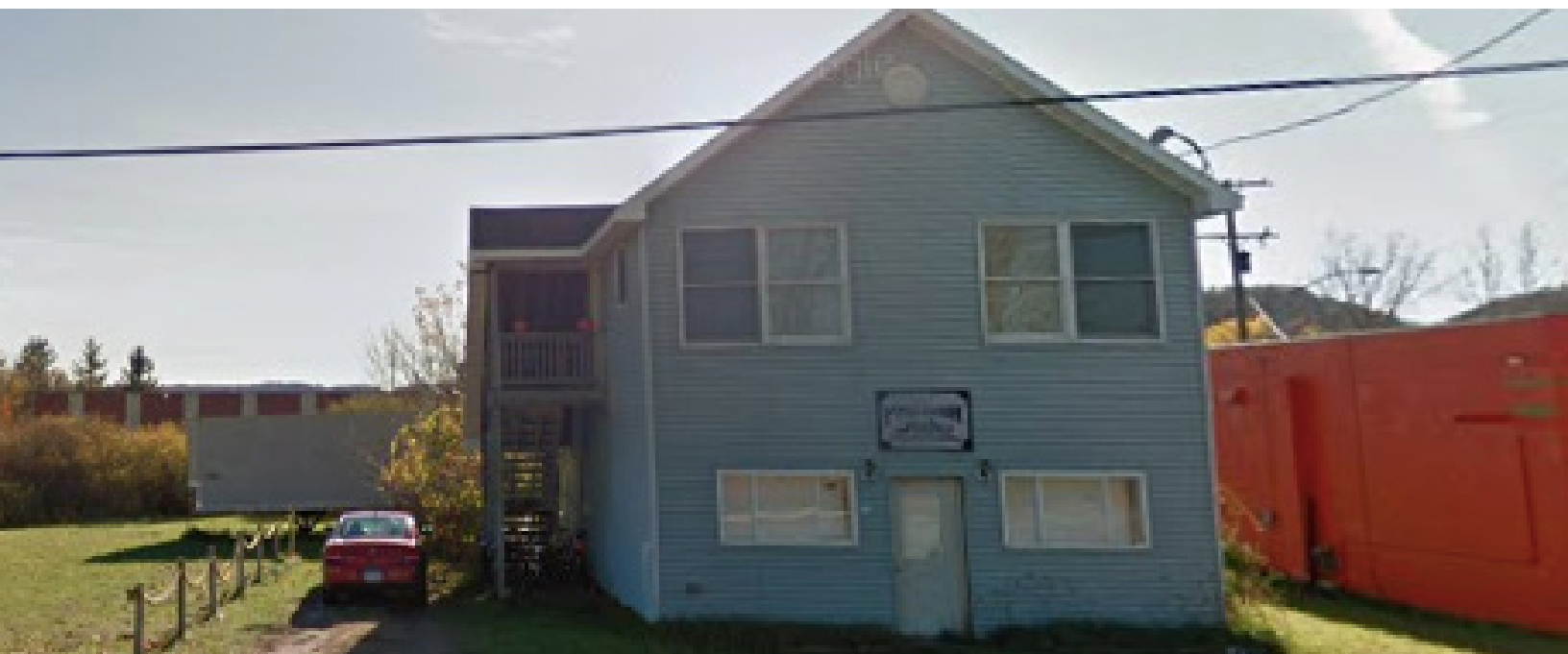
**Nearest Airport:** 2 miles; Frankfort Dow Memorial Airport

**Major Highway:** 7 Miles

**Major Interstate:** 85 Miles

**Nearby Retail Hub(s):** Downtown Frankfort

**Nearby Development(s):** <1 Mile



## Utilities

### Electric Provider

#### Consumers Energy

Business Service: 1-800-805-0490

### Natural Gas Provider

#### DTE Energy

Business Service: 1-855-383-4249

### Broadband/Fiber Providers:

#### Spectrum

1-855-670-1454

#### AT&T

Business Service: 1-877-219-3898

### Water Provider

#### Frankfort City

(231) 352-7117

## Contact

### Joshua Mills

Superintendent for City of Frankfort,  
Zoning Administrator for Village of  
Elberta, Gilmore Township, and Blaine  
Township

(231) 352-7117

[jmills@cofrankfort.net](mailto:jmills@cofrankfort.net)

