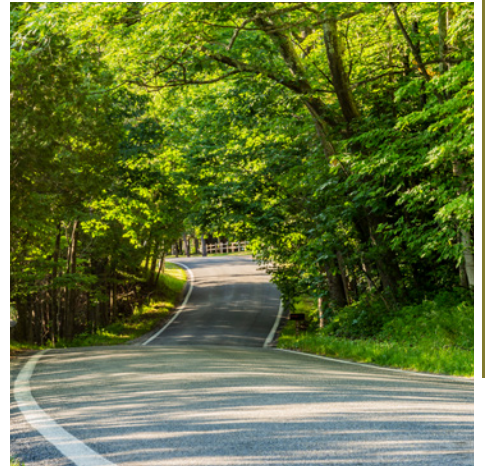


TN Thrive North

More Water. Less Traffic.

A Better Business Model.



Frankfort/Elberta
Benzie County
1100 Main Street



Joshua Mills
Superintendent for City of Frankfort,
Zoning Administrator for Village of
Elberta, Gilmore Township, and Blaine
Township
(231) 352-7117
jmills@cofrankfort.net

PREPARED BY:



WWW.FOURTHECONOMY.COM



WWW.NETWORKSNORTHWEST.ORG

Opportunity

This one-story mixed-use building has Main Street frontage, is directly across the street from the Frankfort Manufacturing Company, and directly west to two vacant parcels and another mixed-use building for sale. Sites could be purchased in a bundle for larger development. This site is also adjacent to the Betsie Valley Railway and one block away from the Frankfort Municipal Marina. This could be an excellent outfitter-type store.

Size: 7,800 sq ft

Zoning: Commercial

Vacancy: Vacant

Previous Use: Surf Shop

Move-in Ready: Yes

Building Plan: No

Current Owner: Nancy Bourdine

Site Amenities

Public Transportation: Yes

Highway/Interstate Access: Yes

Transit Corridor: 200 Ft.

Rail: 41 miles

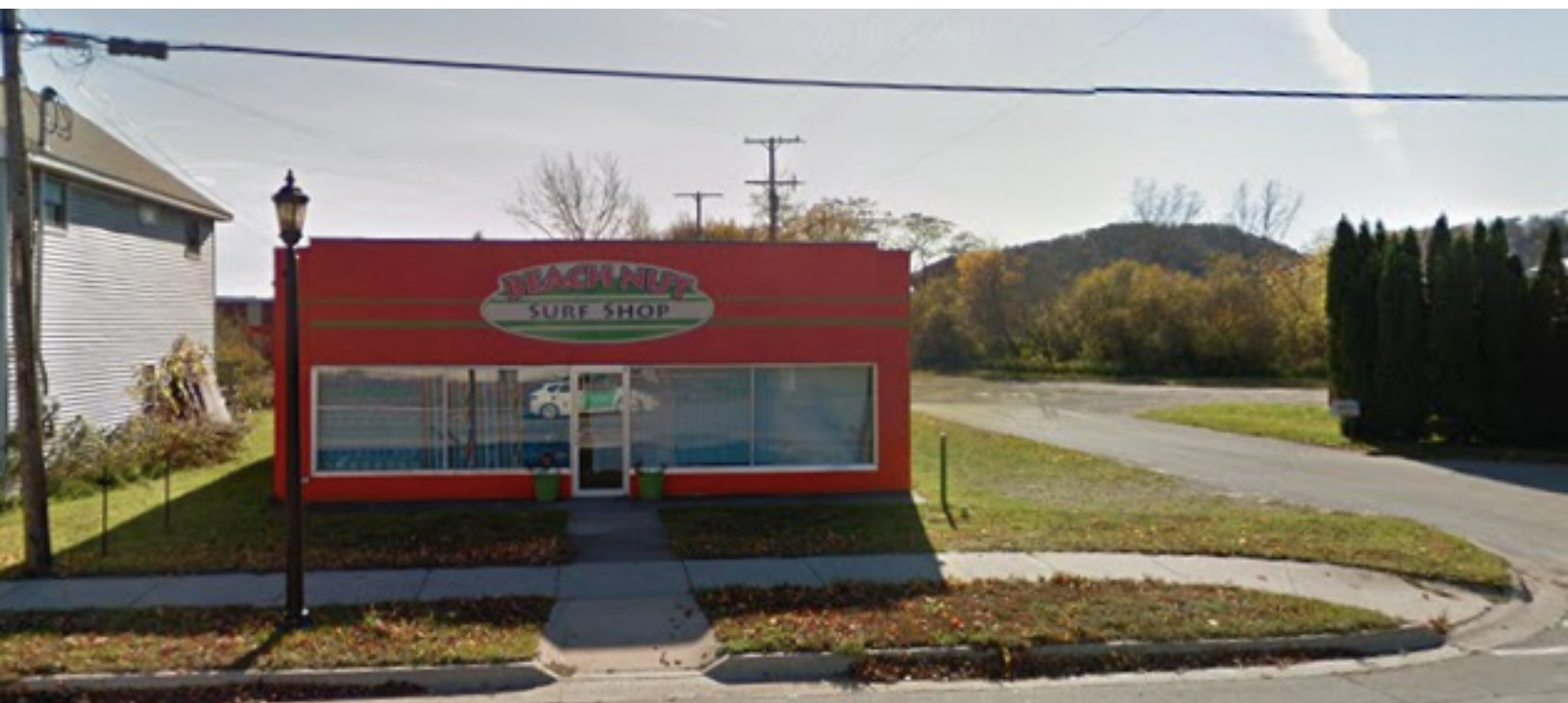
Nearest Airport: 2 miles; Frankfort Dow Memorial Airport

Major Highway: 7 Miles

Major Interstate: 85 Miles

Nearby Retail Hub(s): Downtown Frankfort

Nearby Development(s): <1 Mile



Utilities

Electric Provider

Consumers Energy

Business Service: 1-800-805-0490

Natural Gas Provider

DTE Energy

Business Service: 1-855-383-4249

Broadband/Fiber Providers:

Spectrum

1-855-670-1454

AT&T

Business Service: 1-877-219-3898

Water Provider

Frankfort City

(231) 352-7117

Contact

Joshua Mills

Superintendent for City of Frankfort,
Zoning Administrator for Village of
Elberta, Gilmore Township, and Blaine
Township

(231) 352-7117

jmills@cofrankfort.net

